

swinburne  
maddison

A modern  
law firm  
*rooted in  
tradition*



# A law firm where experience meets innovation

Blending tradition with innovation, we stay grounded in our history while looking ahead to a future full of possibilities.

For us, tradition means understanding the foundations of legal excellence and using that insight to guide our clients, both business and private, towards new opportunities. We learn from the past to shape forward-thinking solutions, always with expert knowledge at the core.

# A journey built on trust

At **Swinburne Maddison**, our story is one of growth, resilience, and long-standing relationships - built on a foundation of trust that continues to guide us today.



## 1998

**Swinburne Maddison** was formed through the merger of two respected Durham firms. Built on shared values, exceptional client service and deep legal expertise, we began a new chapter focused on long-term growth and trusted relationships.

## 2006 – 2010

We moved into purpose-built offices at Aykley Heads Business Centre, giving us space to grow and better support our expanding client base. This investment marked a clear commitment to Durham and the wider North East region.

## 2011 – 2019

A bold new brand identity reflected our development into a modern, forward-thinking law firm. Leadership additions and a major office refurbishment in 2016 created an environment where collaboration, innovation and client service could thrive.

## 2020 – 2024


We remained agile through changing times, supporting clients during the pandemic and adapting how we worked. We celebrated our 25th anniversary and received regional awards recognising our legal excellence and strong client relationships.



## Today

We are a 95-strong team offering clear, expert legal advice across a broad range of specialisms. From individuals and families to start-ups and long-established businesses, we're trusted by clients across the North East and beyond.

While much has changed, our values remain the same. We are built on trust, care, agility and collaboration, with a dedication to quality and a belief in building relationships that stand the test of time.

A man with a beard, wearing a dark suit, white shirt, and patterned tie, stands on a balcony with a metal railing. He is looking out over a town built on a hillside. In the background, a large stone castle or fortress sits atop the hill, surrounded by trees with some autumn-colored foliage. The sky is overcast with grey clouds. The overall scene is a mix of urban and historical architecture.

"Let's build a whole community, where everyone feels a personal connection and a sense of belonging."

Jonathan Moreland | Managing Partner

# Here to help *your business* thrive

Experts in business law, with a proven track record.

We're not just legal advisors - we're long-term business partners. Our commercial teams work across industries and sectors, helping clients navigate complex challenges, seize new opportunities, and grow with confidence.

## Our expertise includes:

---

Commercial Law

---

Commercial Property

---

Company Secretarial Services

---

Corporate

---

Dispute Resolution

---

Employment

---

Licensing



"The team has a keen commercial awareness which I've not experienced with other firms dealing with similar issues."

**The Legal 500 UK**

We consider  
the end  
before you  
begin.



# Your industry *our expertise*

Our sector knowledge runs deep, built over decades of real-world experience and long-standing client relationships. Recognised as leaders in the region, we deliver specialist advice across Durham, the North East and beyond.

## Our expertise includes:

---

Agriculture and Rural

---

Banking and Finance

---

Education

---

Healthcare

---

Leisure and Hospitality

---

Manufacturing and Engineering

---

Professional Services

---

Social Housing

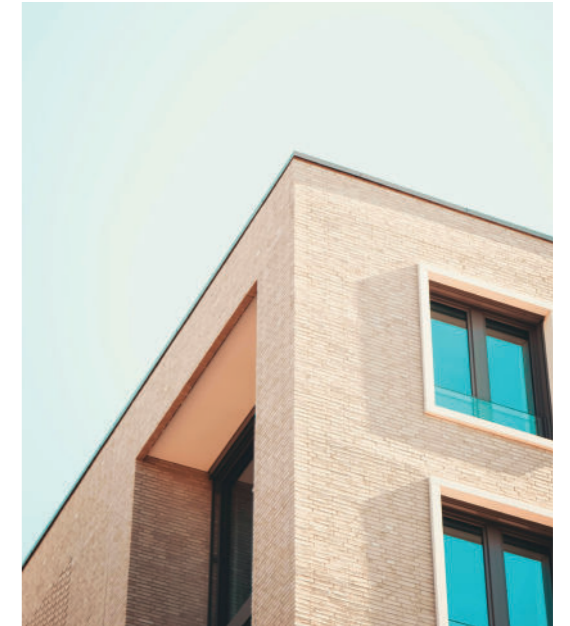
---

Technology

---

Our teams work closely together, combining their knowledge to offer practical legal support that reflects your goals and your sector.

Whether we're guiding a manufacturing client through M&A or helping farming families plan for the next generation, we bring together the right people at the right time.



Guidance  
shaped  
around  
your sector.

# Protecting what truly matters

Experts in private law, with a proven track record.

Life is full of important decisions and sometimes, unexpected challenges. We are here to help our clients make the right choices, with support that's as empathetic as it is expert. From buying a home, writing a will, going through divorce, or dealing with employment issues, our team are there every step of the way, providing peace of mind.

## Our expertise includes:

---

Residential Conveyancing

---

Dispute Resolution

---

Employment

---

Family

---

Private Client

---



Providing the support we'd want if we were in your shoes.

"There was genuine care taken to make us feel as comfortable as possible over such a difficult few months. They gave us outstanding service throughout our case."

### Client Testimonial





We believe legal advice  
should do more than  
solve problems - it should  
empower people.

# Our core values

At **Swinburne Maddison**, our values are more than words - they're the principles that guide how we treat clients, colleagues and the wider community.

## Trust

We believe strong relationships are built on honesty and reliability. Our clients know they can count on us - for clarity, for consistency and for support when it matters most.

## Agility

We're proactive, responsive and ready to adapt. Whether the legal landscape changes or personal circumstances do, we'll pivot quickly, keeping ahead of the curve.

## Care

We never forget that behind every legal matter is a person, a family or a business that matters. That's why we take the time to listen, to empathise and to provide advice that's tailored to the individual situation - not just the law.

## Collaboration

Great results come from great teamwork. Whether it's working across departments with other professionals, or directly alongside clients, we believe in open communication and shared goals.



# A firm that gives back

At **Swinburne Maddison**, we don't just work in our community, we support it.



Charity of the Year partnerships, St Cuthbert's Hospice.



Environment initiatives, from reducing waste to team clean-up days.



Regular volunteering and fundraising for local causes in the region.



Cultural sponsorships, including Lumiere, Durham Book Festival and sporting events.

# Collectively brilliant. Individually respected.

We pride ourselves on being trusted experts in the legal field. Our team is agile, approachable, jargon-free and genuinely committed to delivering the best possible legal solutions to our clients.



# Careers

## Opening the legal door to *a world of opportunities.*

We are passionate about the law, but even more passionate about our people. Whether you're starting your legal career or looking for your next challenge, Swinburne Maddison is a place where you can thrive. We are supportive, offer real opportunities for development and believe in making a meaningful impact.

We care about our people as much as we care about those we represent. In 2025, we were accredited with Silver status by Investors in People, reflecting our commitment to wellbeing, growth and inclusivity.

For more information visit  
[swinburnemaddison.co.uk/careers](https://swinburnemaddison.co.uk/careers)



You're in  
*expert  
hands*

We're a UK Top Tier law firm  
recognised for excellence across  
all practice areas by the Legal 500.  
*And that's reassuring to know.*

swinburne  
maddison

# Award winning, yet humble

We're not ones to boast, but we're proud of our achievements.

## Northern Law Awards

In 2025, we were proud to be named Law Firm of the Year at the Northern Law Awards. It marked our third win, following previous successes in 2017 and 2023 and reflects the strength of our team, the trust of our clients and the journey we've been on.

Over the years, our Private Client, Dispute Resolution and Property teams have also been recognised and many of our individuals have received awards for their outstanding contributions.

## Insider North-East Awards

We are proud sponsors of both the Insider North East Dealmakers and the Insider North East Property Awards, reflecting our commitment to recognising excellence across the region.

In 2023, our Commercial Property team was named Commercial Property Law Firm of the Year, and we're regularly shortlisted for Corporate Law Firm of the Year. That same year, we celebrated a major win when one of our deals was awarded Deal of the Year, showcasing the strength and expertise of our corporate teams.



“The team is down to earth, but very knowledgeable. They can communicate complex ideas to clients in a simple manner.”

## Legal 500

In the Legal 500, we are ranked as a leading firm across all of our practice areas. With over 20 of our lawyers receiving individual recognition and four top-tier rankings in Corporate, Commercial Property, Commercial Litigation and Social Housing, we are proud of the depth and consistency of our expertise.

In 2025, we were shortlisted for Commercial Property Law Firm of the Year, competing alongside firms from across the UK and in 2023 we received an award for client care, following exceptional feedback from clients we support.





Teamwork powers everything we do. We believe collaboration gives the best results.

# Let's work together

We embrace the future while learning from the past, creating a space where everyone can thrive. It's this balance that helps us build strong connections and a true sense of community.

[swinburnemaddison.co.uk](http://swinburnemaddison.co.uk)

0191 384 2441



swinburne  
maddison

Reassuring to know.

Venture House, Aykley Heads Business Centre, Durham, DH1 5TS  
0191 384 2441 | [hello@swinburnemaddison.co.uk](mailto:hello@swinburnemaddison.co.uk)

[swinburnemaddison.co.uk](http://swinburnemaddison.co.uk)

